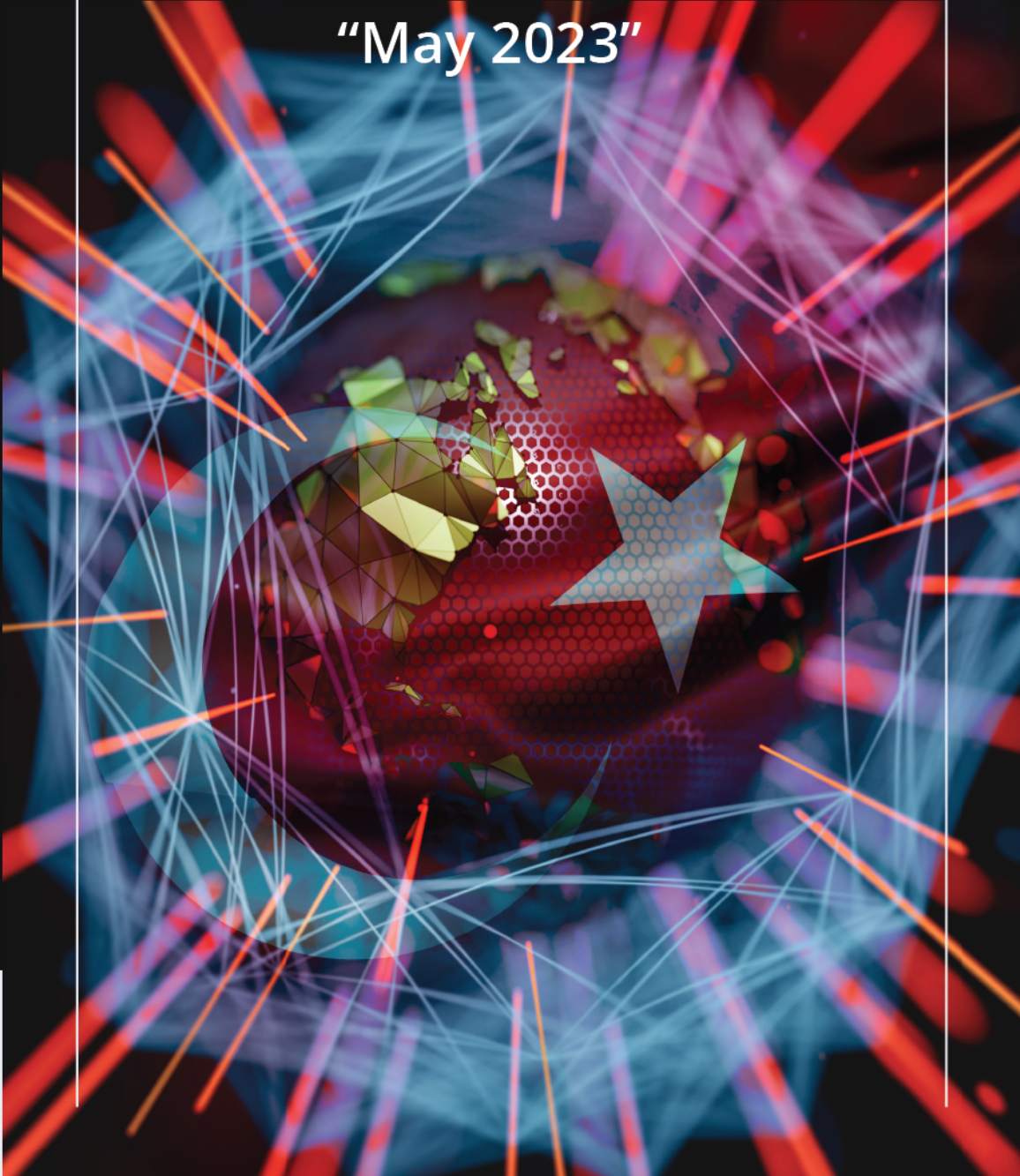


# CYBER THREAT REPORT:

Analyzing Ransomware And Apt  
Attacks Targeting Türkiye

"May 2023"



ThreatMon



@ThreatMon



@threatmon



@MonThreat



@TMRansomMonitor



|  |           |
|--|-----------|
| <b>Introduction.....</b>   | <b>3</b>  |
| <b>Information About Ransomware Groups That Attacked This Month.....</b> | <b>4</b>  |
| Medusa Ransomware Group.....   | 4         |
| LockBit Ransomware Group.....  | 5         |
| 8Base Ransomware Group.....  | 6         |
| Information on Attacks Against Türkiye.....                              | 7         |
| <b>Information About APT Attacks Targeting Türkiye.....</b>              | <b>9</b>  |
| Group123.....  | 9         |
| Turla.....   | 10        |
| MuddyWater.....  | 10        |
| <b>Analysis of Attacks.....</b>  | <b>11</b> |
| Threat Actor Based Analysis:.....  | 11        |
| Malware Tag Based Analysis:.....   | 12        |
| <b>IOC's.....</b>  | <b>13</b> |



## Introduction

ThreatMon, as a leading Cyber Threat Intelligence (CTI) firm, presents its comprehensive report on the Ransomware and Advanced Persistent Threat (APT) groups targeting Türkiye in May. This report aims to provide valuable insights into the evolving threat landscape, highlighting the activities and tactics employed by these malicious entities. By analyzing the latest trends and emerging patterns, we aim to assist organizations in enhancing their cybersecurity posture and proactively defending against these threats.

Ransomware attacks have emerged as a significant cybersecurity concern worldwide, posing a serious threat to businesses, governments, and individuals. In recent months, Türkiye has witnessed an alarming increase in ransomware incidents, leading to substantial financial losses, operational disruptions, and compromised data security. Our report focuses on the notable ransomware groups that have targeted Turkish entities, shedding light on their attack vectors, preferred techniques, and potential motivations.

In addition to ransomware, Advanced Persistent Threat (APT) groups continue to pose formidable challenges to the security of critical infrastructure, government agencies, and various industries. These well-resourced and highly sophisticated adversaries employ advanced techniques to gain unauthorized access, maintain persistence, and exfiltrate sensitive information.

By consolidating both Ransomware groups and APT groups within a single report, ThreatMon aims to provide a holistic view of the threat landscape faced by Turkish organizations. This comprehensive approach enables security teams and decision-makers to gain a deeper understanding of the evolving tactics and potential convergences between these distinct threat vectors. By staying ahead of the adversaries, organizations can implement proactive measures, establish effective incident response plans, and fortify their defenses against these persistent threats.

As cyber threats continue to evolve in sophistication and scale, our report serves as a valuable resource to raise awareness, promote collaboration, and facilitate timely action. By equipping organizations with actionable insights, we endeavor to foster a safer digital ecosystem and empower defenders in their battle against malicious actors.

We hope this report proves to be a valuable asset in fortifying your cybersecurity posture and enabling you to effectively combat the evolving threat landscape.



## **Information About Ransomware Groups That Attacked This Month**

### **Medusa Ransomware Group**

Medusa Ransomware group is known to have first appeared in 2021.

This ransomware group usually encrypts the data of target systems and performs attacks to demand ransom from users. The main motivation of the group is money, as in similar ransomware groups.

It is not known exactly when the first attacks of Medusa Ransomware were carried out, but the first data of this ransomware group was observed by ThreatMon in 2021. Medusa Ransomware typically attempts to infiltrate target systems using email attachments, malicious links or vulnerabilities. Therefore, this ransomware group primarily uses phishing methods on its targets.

Medusa Ransomware usually carries out its attacks against many countries and various sectors around the world. In particular, sectors such as finance, health, energy, education and the public sector have been targeted. In addition to being a widely distributed malware, this ransomware group often uses cryptocurrencies to demand ransom from its targeted victims. These cryptocurrencies are often differentiated between specific attacks by the ransomware group and general-purpose attacks.



## LockBit Ransomware Group

LockBit is a notorious ransomware group that has gained prominence in the cybersecurity landscape. Known for their sophisticated techniques and high-profile attacks, the LockBit Ransomware Group specializes in encrypting files on victims' computers and demanding a ransom payment in exchange for the decryption key. The group operates on a ransomware-as-a-service (RaaS) model, where they provide the malicious software to affiliates who carry out the actual attacks. This approach enables them to expand their reach and increase their illicit profits.

LockBit3.0 is the latest version of the LockBit ransomware. It was released in June 2022 and is more sophisticated than previous versions. LockBit3.0 uses a modular architecture, which allows it to be customized to target specific victims. It also includes a number of features that make it more difficult to detect and remove. LockBit3.0 employs a combination of phishing emails, exploit kits, and remote desktop protocol (RDP) brute-forcing to gain unauthorized access to target networks. Once inside, it quickly spreads across the network, encrypting files and rendering them inaccessible to the victim. The ransomware then leaves a ransom note demanding a significant sum of money in Bitcoin for the decryption key.

LockBit primarily targets organizations, especially those with valuable data and significant financial resources. The group has been known to focus on industries such as healthcare, finance, manufacturing, and critical infrastructure. Their attacks have the potential to cause severe disruptions, financial losses, and reputational damage to their victims.



## 8Base Ransomware Group

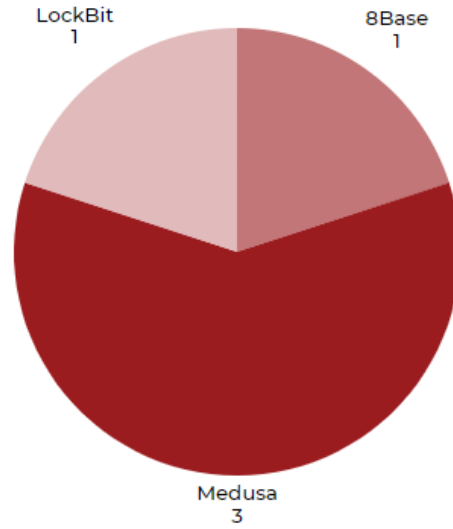
8Base is a ransomware-as-a-service (RaaS) group that has been active since April 2022. The group is known for its aggressive tactics, including double extortion, which involves stealing a victim's data in addition to encrypting it. 8Base has targeted a wide range of victims, including businesses, governments, and individuals.

The 8Base ransomware is distributed through a variety of methods, including phishing emails, drive-by downloads, and exploit kits. Once it is installed on a victim's computer, the 8Base ransomware will encrypt all of the files on the computer. The ransomware will then display a message demanding a ransom payment to decrypt the files.

The 8Base ransomware group typically demands ransom payments in Bitcoin. The amount of the ransom payment varies, but it is typically in the thousands of dollars. If the ransom payment is not paid, the 8Base ransomware group will typically threaten to release the victim's data to the public.

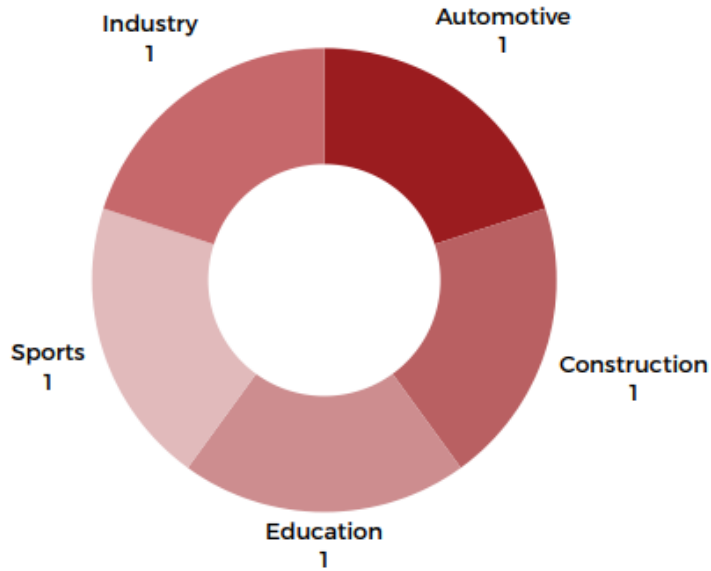


## Information on Attacks Against Türkiye



### Number of Attacks on Türkiye by Ransomware Groups in March

Türkiye has faced an increasing threat from ransomware groups, with significant attacks carried out by LockBit and 8Base. Medusa, known for its sophisticated techniques, carried out three major attacks targeting various sectors in Türkiye. LockBit, another notorious group, also targeted the country with one major attack. Similarly, the newly emerged 8Base ransomware group also carried out one major attack on Türkiye.



### Sectoral Chart of Attacks by Ransomware Groups in Türkiye in May 2023

Türkiye experienced five significant ransomware attacks targeting various sectors in May. The attacks affected the automotive, construction, education, industry and sports sectors, underlining the wide range of sectors affected by cyber threats. These attacks disrupted operations, compromised sensitive data and caused financial losses in these sectors. These incidents underline the urgent need for advanced cyber security solutions to protect critical infrastructure and sensitive information in various sectors in Türkiye.





## Information About APT Attacks Targeting Türkiye

The analysis of APT attacks targeting Türkiye in May continues from this part of the report. As ThreatMon, the content of the report has been prepared through carefully selected malware samples of 500 malware samples from threat actors targeting Türkiye in May.

Türkiye received many kinds of attacks from many different threat actors in May, among these attacks, sectors such as public institutions and organisations, automotive and education are among the most affected sectors.

So, before analysing the attacks, let's examine the threat actors that played a role in these attacks.

### Group123

The APT Hacker Group, known as "Group123", has recently become a prominent actor in the cyber security world. The aim of this group is to seize the information systems of the targeted organisations with complex and sophisticated attack techniques and use them for various purposes.

Group123 uses a unique attack methodology. Firstly, they carry out a comprehensive intelligence gathering process to identify the weak points of the targeted organisations. In this process, they analyse the target's network infrastructure, use social engineering methods by targeting their employees and identify security vulnerabilities. Then, they attempt to infiltrate the target network using advanced malware tools and zero day attacks.

Group123's activities are often motivated by financial gain, espionage or cyber intelligence gathering. In particular, organisations in the financial sector are among the targets of this group due to their vulnerable infrastructure and sensitive data. At the same time, governments and large corporations are other potential targets of interest to Group123.



## **Turla**

Turla is an APT group operating internationally. This group, which first emerged in 2004, is based in Russia and is believed to be state-sponsored. Turla carries out sophisticated and complex attacks against its targets for cyber espionage and information gathering purposes.

The most prominent feature of Turla is that, unlike other APT groups, it uses complex malware tools and advanced methods. The group's targets are usually strategically important organisations such as government agencies, diplomatic missions, military units, energy companies and communication infrastructures.

Turla's attacks are usually carried out through methods such as "watering hole" attacks, phishing, malicious emails and zero-day attacks. It also manages its attacks using complex command and control (C&C) infrastructure and acts in a way that is difficult to trace.

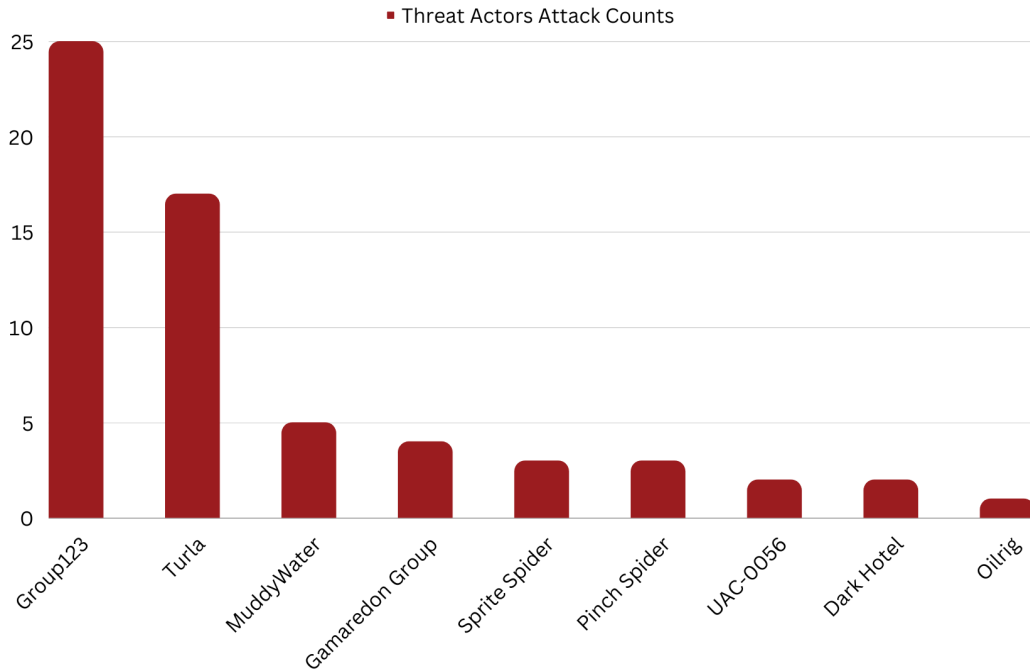
## **MuddyWater**

MuddyWater is an emerging and evolving APT hacker group in recent years. This hacker group targets high-profile targets such as government agencies, diplomatic missions and the telecommunications sector, especially in the Middle East. MuddyWater's attacks are usually carried out in a complex and sophisticated manner and are usually aimed at espionage activities. The group's most prominent characteristic is its use of social engineering tactics, using fake documents and emails to mislead users and spread its malware.

MuddyWater infiltrates target networks using advanced network penetration techniques and then carries out long-term monitoring activities. It is not known exactly who the actors behind this hacker group are, but some security experts suggest that the group may be linked to a state or state-sponsored actor operating in the Middle East.

## Analysis of Attacks

### Threat Actor Based Analysis:



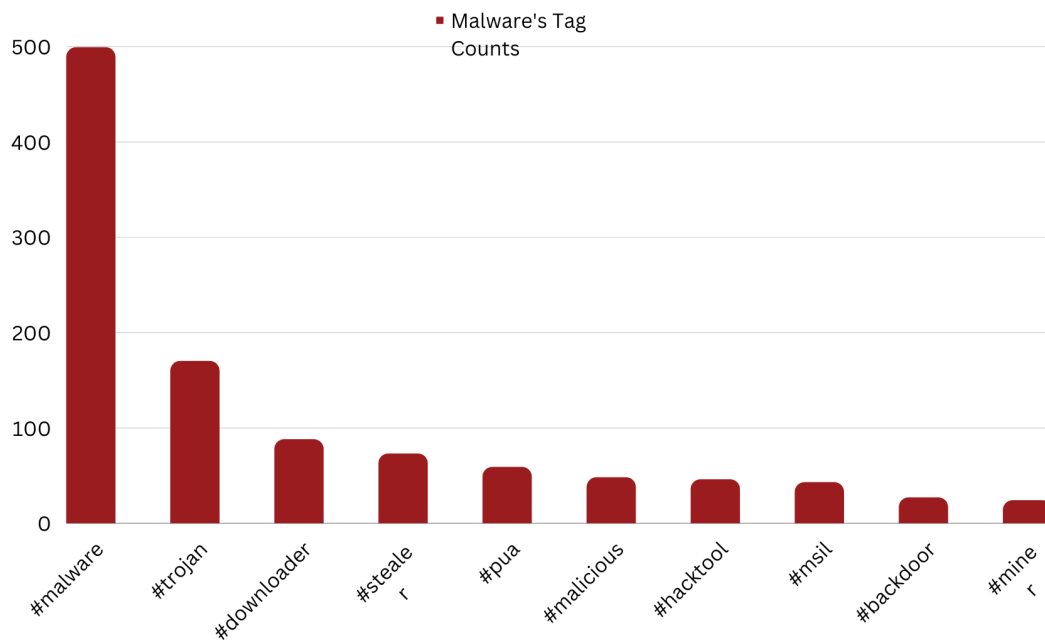
According to the studies conducted by ThreatMon on the malware detected by ThreatMon, the data obtained from the relevant threat actors among 500 malware are listed below:

- Group123: 25
- Turla: 17
- MuddyWater: 5
- Gamaredon Group: 4
- Sprite Spider: 3
- Pinch Spider 3
- UAC-0055: 2
- DarkHotel: 2
- Oilrig: 1

When the data obtained here are analysed, it is determined that most attacks were made by Group123, also known as APT37, a North Korea-based threat actor.



## Malware Tag Based Analysis:



The tags extracted to determine the characteristics of malware on the research conducted on 500 malware detected by ThreatMon are listed below.

- #malware: 499
- #trojan: 170
- #downloader: 88
- #stealer: 73
- #pua: 59
- #malicious: 48
- #hacktool: 46
- #msil: 43
- #backdoor: 27
- #miner: 24

The data listed here is provided to briefly describe the characteristics of the malware.



## IOC's

In the study conducted by ThreatMon on these malware detected by ThreatMon, SHA-256 format file hashes obtained from malware files are listed below.

| IOC Type | IOC   |
|----------|---|
| SHA-256  | f526538899e5e402b8111d6ac1dd6bf10aab5c072ba52a49c736bca3cbcf8e72  |
| SHA-256  | a67d97cd3156cf87b2ab5597fda9e9801f733a4ce24ab88d00e00aa9d177bb7f  |
| SHA-256  | ae95c97c56edf028be46cd339bf169abd35e7602e33c5135ae5ff91540608187  |
| SHA-256  | 1d9fcd9cc8c4806f059becffc70e6bfaf0a647bde2acd0c0dc8448bcc8bdaf0   |
| SHA-256  | 201c0e189f659c17c8a97e7271a81ba6b88e84d56966d4eb7ccdd0444a8fa577  |
| SHA-256  | 079d270901adda086ac23ed59e7be94a0fe446212536ae973d1accff311b839c  |
| SHA-256  | 196da9104b097ef7ce4ac50046b5f444b90a0cc38b4dffcc9cf111afcf1f52e0  |
| SHA-256  | 8e0989a73ba7d02eaa355ce595bd432111ead3aff5b8c9904960540eef9b8856  |
| SHA-256  | 72eab75a1b9afae887c76f16b154d7c7d000f7c7e2e877972114865f829cd690  |
| SHA-256  | bc9e61760915f993ac88c0d8514063fe933141d7934044dc6877bb1c487825b5  |
| SHA-256  | abfdb171e96b6db36f6765f073b5b189adfd71de41f4d477f005cf468e99950   |
| SHA-256  | b89a83152a0ab7feee655f13784bd042916f2b456ddfd9c189e9d08c2caf49c6  |
| SHA-256  | d9a73298d4d4342c9cccedd670a82947032228a139168689ca173ff9534e0e3e  |
| SHA-256  | eab932a53d5a01c0b78c07943f24838c6ebca0d9451af59a0afd0530fcc4ee36  |
| SHA-256  | 33dcb06de68e807c148cec866356425ecf53078d97e8f360e4b2bd7b54eaebeb  |
| SHA-256  | 500dff1078e3c5a58ab6b265167f36ee51f3a50e07d38aa5b3dbae82c3ce31ad  |
| SHA-256  | 25b864d594a05640a38aafef07c3f83cc8595cc428908347f08e0cb8880efffd3 |
| SHA-256  | 55bed2eadb1e48b4b5dcb42de04dc4a1dc409ca508899adda44afd1a80650ba7  |
| SHA-256  | 456ef9e7bc707734ab7d95afef7424e910bb9a3bd8b3867c489dcc1f62c45af6  |
| SHA-256  | 083f7d27afc98495b0a932098410ac5d8c2042b8bafc7aec7d76ab0cd6d8de67  |



|         |  |
|---------|--|
| SHA-256 | 2013ee2965eb9d8fc11ddd5c2223fb0e279faa6d0c9f5641b9bb319981994a55 |
| SHA-256 | 38c322adcca3bf0ef203243812d61c5595de03656d7c5e8b9fa5bfb9bc3fbad  |
| SHA-256 | a9c6e9e79468257428385ab0d62dc77e950a0727d0ac61eca39b6f51d4915ada |
| SHA-256 | 11b26e1efd58d494059ec35bc315ceb91a8832e7d746c1d8c0b233b22dfbbaa2 |
| SHA-256 | 961b5e9c3e83249b63995ddf371e693fd35089f8f87b44a2e69f5ff924ccec95 |
| SHA-256 | c9b39e66aa1ed85018b365075009d11b21c8b1c19e0f76358d16905f8fa08b4b |
| SHA-256 | 8c9ab40d2cecd4083d6a25b96eb73894e35c280ae84d3ce05d949116fefcf96a |
| SHA-256 | a60f6c5ed43ef3306da4063ba19d4811255bcb00b3afa1aba82b2431688f4bf5 |
| SHA-256 | 4acc970432296981fd323e298aed903add79bbfa004a89d8d62909af4424e15b |
| SHA-256 | 525ff352bb9e0994c7398df9e212d36a55b8e8239383d0f17fe87c98893725e7 |
| SHA-256 | dbb210d6ef1b287e2ecae20dd062a3e529a79b973f98840a7c6af586e96f6688 |
| SHA-256 | b018d641b421c9c8af4e0b2fa7252d5b5832f2e07b06af322cf4a56fb0ee3080 |
| SHA-256 | b6c5eaf007696dba786dc4f5247b62cb038e61ce0cf55790182042076c3a7b6c |
| SHA-256 | abb5f1dc250674111e25e58918712e5fe0637f5ea276e87da69efeac0b4bd46e |
| SHA-256 | 0113254eb7e022a8814f59a23079ebf9e6e1fd1dfe2d8042ea7d46babd80de9d |
| SHA-256 | 60399c07da502a2edaf3dc1b13b10bfc7f9cbf10d9dd72296e77dcd836e1b39  |
| SHA-256 | f5656da1b652871d97db975799016d7212430268c17199e88f161d5619744017 |
| SHA-256 | ea81f4f7160d1340e539cf21f5602bc1823d46bf4df3a94132dd57b454e7ed40 |
| SHA-256 | 0e49b7dd1d8d6ed6aa9b5cce05938fbbc2529d0752412427157f389a38d3e95c |
| SHA-256 | d52a1c4b9a509b2d617bb886e00a5da89034460228642fbd8c11f8c203f43a3b |
| SHA-256 | 75bd29321df66d08f058c0097aec9460dec0d6d5c5f6825d3d5cce738d3c739f |
| SHA-256 | 97d936be4f494994f4afced2460300c784ecf477d2985b5f2b0026f471437cbe |
| SHA-256 | 90d19904e90cb4089a872344ebcee24920f380f20bb43b1f878f86c33a9f87de |
| SHA-256 | 1d0d1cbe2df12620dc37fc4fd3f249aeda80eb67d8358d524ba03900e933b546 |
| SHA-256 | 11b26e1efd58d494059ec35bc315ceb91a8832e7d746c1d8c0b233b22dfbbaa2 |
| SHA-256 | 961b5e9c3e83249b63995ddf371e693fd35089f8f87b44a2e69f5ff924ccec95 |



|         |  |
|---------|--|
| SHA-256 | c9b39e66aa1ed85018b365075009d11b21c8b1c19e0f76358d16905f8fa08b4b |
| SHA-256 | 8c9ab40d2cecd4083d6a25b96eb73894e35c280ae84d3ce05d949116fefcf96a |
| SHA-256 | a60f6c5ed43ef3306da4063ba19d4811255bcb00b3afa1aba82b2431688f4bf5 |
| SHA-256 | 4acc970432296981fd323e298aed903add79bbfa004a89d8d62909af4424e15b |
| SHA-256 | 525ff352bb9e0994c7398df9e212d36a55b8e8239383d0f17fe87c98893725e7 |
| SHA-256 | dbb210d6ef1b287e2ecae20dd062a3e529a79b973f98840a7c6af586e96f6688 |
| SHA-256 | b018d641b421c9c8af4e0b2fa7252d5b5832f2e07b06af322cf4a56fb0ee3080 |
| SHA-256 | b6c5eaf007696dba786dc4f5247b62cb038e61ce0cf55790182042076c3a7b6c |
| SHA-256 | abb5f1dc250674111e25e58918712e5fe0637f5ea276e87da69efeac0b4bd46e |
| SHA-256 | 0113254eb7e022a8814f59a23079ebf9e6e1fd1dfe2d8042ea7d46babd80de9d |
| SHA-256 | 60399c07da502aedaf3dc1b13b10bfc7f9cbf10d9dd72296e77dcd836e1b39   |
| SHA-256 | f5656da1b652871d97db975799016d7212430268c17199e88f161d5619744017 |
| SHA-256 | ea81f4f7160d1340e539cf21f5602bc1823d46bf4df3a94132dd57b454e7ed40 |
| SHA-256 | 0e49b7dd1d8d6ed6aa9b5cce05938fbbc2529d0752412427157f389a38d3e95c |
| SHA-256 | d52a1c4b9a509b2d617bb886e00a5da89034460228642fbd8c11f8c203f43a3b |
| SHA-256 | 75bd29321df66d08f058c0097aec9460dec0d6d5c5f6825d3d5cce738d3c739f |
| SHA-256 | 97d936be4f494994f4afced2460300c784ecf477d2985b5f2b0026f471437cbe |
| SHA-256 | 90d19904e90cb4089a872344ebcee24920f380f20bb43b1f878f86c33a9f87de |
| SHA-256 | 1d0d1cbe2df12620dc37fc4fd3f249aeda80eb67d8358d524ba03900e933b546 |
| SHA-256 | 5a9f5ef24991509d02edcdd67cee0d53501113da17bb0a777d7baf7d175a3f12 |
| SHA-256 | 625e113389c62477b80942b90403a59258a97b5453a1eb801fe05bb515f5a16b |
| SHA-256 | de80076c4c1d002abd45622a0e79f3f823560d66ef4ef66055ab1a88341d16a7 |
| SHA-256 | 63338a1bb94730b91ec508057ffabde1eb3271801133cd0ee77ce2a90075ef82 |
| SHA-256 | f0d9d3cd8f7c3b7bb1f808ac18580de99b687bfac6ef874a42d62f2f5f4829eb |
| SHA-256 | 2cefef4f1aca5857b69485f7c729d33f7bc1d57212c5431b7bfc4b2e3aa09372 |
| SHA-256 | 0fb110fd88f176387fd5f3463e34c68af091da0c7b195067ef0c265ce8e4fb0c |



|         |  |
|---------|--|
| SHA-256 | d28aeaacb58899e20df78eaa81232df541a67c3de7ef0389f692a8c806452d55 |
| SHA-256 | fc625f625ba8645db8347fc22f651c233a0b4487326aba2392c7c2e04bb9ee54 |
| SHA-256 | 54ac23398b8834db714df44666715e0513d627cc6cfc715de2ef7abe14ac7071 |
| SHA-256 | 4302b37ec8cbe50e8bda3d99dd244435a2c1e93c7f887366fb3a4aac9fd94c06 |
| SHA-256 | cc68c371c7313c1fd15ac0a05f20fb9321355d8a07fbea7c0085e237c95be377 |
| SHA-256 | d8ee8beb7b6f2eab62b52d1b255e1fcfd4541b54de0f3a5b4459ec324298e8a1 |
| SHA-256 | 65fc0e507e9d1baf5e840cde7ec319d695446f361984f0681bda2a26af294b9b |
| SHA-256 | 51fea123c44e2a66602133dba03184f818d67c54a3eb115d9b6a4e2ca2afe9fb |
| SHA-256 | e49bf855d92f2ec825e34aa2507d8838c93c89c8894954825f44bad5250e6ed0 |
| SHA-256 | c046847b46fc22076d43f29113be670823ff35ea8fddcf4e842c273d264093ef |
| SHA-256 | bebfa9f1d8bd827c2f30fd3835bf789b5957766bcc32c0e02bc11536fad09493 |
| SHA-256 | 1aff4d19b239a951d0efa523382ba0ef702798ab48df0cc49fbe53a5bc20b01c |
| SHA-256 | d66419bc3746f371a72cdd669f84f69f2030b51b49bdc8c32a511d0d18d0f0ef |
| SHA-256 | 48108f1454701730a16b01c315ab5254c77181152227fe30c95fbc9c530cdd02 |
| SHA-256 | 8eccc9de9490c8001e5c9cc3cd110781431ba78bff0059cab638a3ddc95ac179 |
| SHA-256 | bbf604e492c2ed909949609a25ad95b75d0bc2359655b9229605ce7fe6286ce7 |
| SHA-256 | 27d7d610b39c3d6794f5c616f352a23f0fe05a0c32848009691663a5817afb24 |
| SHA-256 | a34d48a573b1530f7ab242571a05d6188f093e8366dafc2dfce8d5794e84b7ae |
| SHA-256 | eeee8ec280cf99ef241ae8b995ca9f0a2818abaf46c9c336af4cdef824a7d6a3 |
| SHA-256 | b9d5a1a100a1fe3ce268a1bf79748ac4e2d62327fec19c573ca48bac8fc7affb |
| SHA-256 | 6af74516fb7c0debed884b01e4620f5cc09082460f65a88fadefb3bb4d7925dd |
| SHA-256 | a0121d0bfd49da0f2783324ae25892212df91acaa83accecd42871668252647  |
| SHA-256 | 0558dd026a36696928bb9a420345a70968dfa0c6058543a2f77382af919aecc4 |
| SHA-256 | efd7d5f8f6816c208128fe359fc0520d0173c0b3736486a68621fe7e85eb73af |
| SHA-256 | deee8d4194b4e2bc0eeb397fc356b3b92f92f40baaff896a2cab7c3e2b97b409 |
| SHA-256 | be18e5f52d20790f9cc58992adce365e4df3522934bb639b144c97e0ee7f4b97 |
| SHA-256 | 4fa9119e89f36c8deeda520b8b82c9f2fb499aa1c2d0b276a75f30626496b81f |





|         |  |
|---------|--|
| SHA-256 | 4fa9119e89f36c8deeda520b8b82c9f2fb499aa1c2d0b276a75f30626496b81f |
| SHA-256 | 6e0d8872ea2aa8fe36e96cf671cb45362886a41950c23e42adf8ac2f07c4c4ab |
| SHA-256 | 4d741bad2a6e635e944a39fc95f1c3448747fc6e615c0c99776ef2801c2cf1ef |
| SHA-256 | 86d1cfe26a532656cd69ac37d5b818901065e078ba9ba5768719146b415f00e5 |
| SHA-256 | 303d4f9f3d832ba546f81c1ff170814d6e1c2cbdefb0e3ec4725e77abedf6e3c |
| SHA-256 | 99d127e8cb19e01645111b50487c0d054c07ae12b565c0145cb7d2c626fb158d |
| SHA-256 | 8c9e124d98bddd49dc91ea38bea04e3ff1d6abd724ac5180a985e35497511b3  |
| SHA-256 | fa4a29abae72c6ace72bff8b2e94330d2a45791e0ca27ecce76d962a0096b721 |
| SHA-256 | 496d5884d1024ffe98602c194d5ab763cf3698b164db6ba05c8bdd456930c5d5 |
| SHA-256 | 70acfdb86002a1d934aecdbcd793f1fab64eaa481dafd99bef6f31e7caa96729 |
| SHA-256 | 9fc76d1781de0dafd682f7a75250f58f96c2822e93bc38528f5982defcd8bdd9 |
| SHA-256 | 0ffc28dce87a9b54b483887f3f7fed35afac63e5b50b539b1f8e27df8b1863db |
| SHA-256 | bf81c2e7ea87e7c66486e14257476209ce567ba0fefbcf7388b009a0fa365ea3 |
| SHA-256 | 1902ba4831b51938dec57aeae2d34c6119f9a80e1792c2a1fcb47eb495b3fc40 |
| SHA-256 | 58c3231b6fbbb098c0b11b1d65dec73d5818a9991e4375eb4315957ef8b2313b |
| SHA-256 | 5bb35c18d8c18cfaf23cb60657d3f546c1bf240c96afd1e69f84dde02368a0e4 |
| SHA-256 | dd0dcf880e0c573ed9f97829c647da90769a1c8ced879995888add30933d04e8 |
| SHA-256 | d5b3afdf9177e6c7cde55e7400d591f63abe8d1d872b5d3391b7bdb528f7b16c |
| SHA-256 | e7e2e88c95f9bdd4f0221fb502cb503ffa6f5967ebecbfbb256fe417343699ef |
| SHA-256 | 759fb57724e0a94fcdde87930c245916eeab53a6544ba8f6ef76c36c7ff61820 |
| SHA-256 | 62ca70fd276a2531a657b32de946ad0bb18ff23369cab733597be18eebfa6570 |
| SHA-256 | 930c20d5c0b8e25ce392ef78fea83bf513373eae54fc63cc9c06b15f40c2fd6a |
| SHA-256 | e27cad92133e192d2002d239ba2c32609b4b0119d4e15703e4460c14d6e5a02  |
| SHA-256 | 49a9316a5b3b50ee2d12f4e1563b56f675ea0f927a8c7c09a076872e887c87dc |
| SHA-256 | 15b2292f00c8ffd28579752c1462b0abf4a09b6bce55d9490bba59374589cdda |
| SHA-256 | 4f65cb7ac6f82ea51163f2d856e42f9392f91f2a505ccd734d2a57b233b5bbae |
| SHA-256 | bf576d0d9b19af63dc4b8a89e4c3cc89e17cbe12431f429ca13950cf796fa6f8 |



|         |   |
|---------|---|
| SHA-256 | ce6c73600268ee7fa21fd710164950fd72e63d0156870aab39999e2cb1174d19  |
| SHA-256 | 9cbc6584a73553e5ff663dafbf81a16062db03a43b9970ee96e4b1374779e52c  |
| SHA-256 | 6391787902e53fee7a437e18ccede79f551a96d4b3e2421f058db976a5c69780  |
| SHA-256 | 9355865b65efa95d8d4f454601e993c92422ea6c844f849d9737f1c19bfda2c0  |
| SHA-256 | 85371b7041a4b746cc875586a4acd7cdf9dcd3de887d00b72a1a9285f0ead89e  |
| SHA-256 | 21dbffffb1d99f97f6982f4ff42b6e8ab8accd6baca70c095bc7748900163cba3 |
| SHA-256 | 7c43462839a2f07afadd5a34812cc0e9521eccd8a7824a45c74691a9a58935ef  |
| SHA-256 | 2b524356828e07fa5d3d8e648ef194e50ffb0493aefee0983661f3ea3479e9fc  |
| SHA-256 | e0ca6e913a65b95f9d808fe940f7a765e72a5174284da1942b745c1b3a0368e4  |
| SHA-256 | 3ac604f4e35adcba21959283a1bdfeac3b129cd3e16794438543cf33049f36d1  |
| SHA-256 | a03374c861771fdde2bd76a99dd0308959031a06b32de616f141be57f12880a3  |
| SHA-256 | 4fd0b20bbe76cb89ff0123c32e963e2841c3fa0994b323543e3aec53a845ab98  |
| SHA-256 | fc520781ae388c6f8e34b81152471c09fde7c0b9aa680200563f1a25d05bc9a4  |
| SHA-256 | dedd1b4a8dfbf85f4fac0f4224fee75c9b99f8ff641aedeeeb3a4167de04a1fb  |
| SHA-256 | 586c54ec163216889dddabfbc8e2d231463ec0949bfeee33c0b57dcd4af540fb  |
| SHA-256 | 767cbae0f88e4d497706ba30b5646f7a1c3a9f28848078003b68b1ea0a8245e5  |
| SHA-256 | 101377b28cd394ce6628ba145ee2fdb16b68d40c1a858998ec712e34c1b28e8b  |
| SHA-256 | b0d35b819002971b6d455055c8a141b3c1987ebfe7b1acb5f1cdfea9c34ce28e  |
| SHA-256 | bf905b56e6e7c6f931dffabc825443dbc8460a96f537788e306f56f60044e6a2  |
| SHA-256 | a5bb62d1445963f132b0dd918f3c2145bb28e3629a52cc339e0f0595daaa9e18  |
| SHA-256 | 30891de608fb16cb8b55932d81edbe440ba5730d383235601482a28ca6164749  |
| SHA-256 | f743c0b1cae28be3d3ea6d5bf0c1fb3b681e5a4458bd2b7b0665b489542e3083  |
| SHA-256 | 4ff66eb1170ddf8ffa5ca14895d95ce4117adcb37a7f339e52ede8644a3618da  |
| SHA-256 | 3e2638db7a3776a686bb8bd27715e37b50c12823a8dcd00d3a9a50a46d073cbc  |
| SHA-256 | bcbbf2855a56119e45f1b8500ebc700caa3b1d1a5b2ca9e6f6a2a018051215fd  |
| SHA-256 | e604f0cb3403433b52f0c0b8f179d2b4b1eb7bb7714b34479b81dcb9dc9c76a7  |
| SHA-256 | 4558459adff1a9a2b4cb8fa84fa3a8efe0c9fac99e7880fbb4b88cf9072ae37a  |



|         |  |
|---------|--|
| SHA-256 | 150e4775bb68bec9a240efa55e5413161ad93e3df8cb6d3e49492b3f3145eb73 |
| SHA-256 | 27f9c06e9631e2a86a2d823bc30520befe16904905e586baea5e8d7e0ebf30db |
| SHA-256 | 0c71881be8ce9b28c2ba4679e8494adadb73fa4d1dff381f4fd92d2fdfae4d6f |
| SHA-256 | 1b639fd3d1c5cfeb3f4361d814e9648b96ae394929c46b456fbcff58156f5b52 |
| SHA-256 | 4c94731564572fb38d50187d3710bfd063408744973e6cb358e8638418bd9c9b |
| SHA-256 | e7640540ab3130676c6f814485c2aa3492fb3dda0535cd939daed3fb420f1e37 |
| SHA-256 | 147d25ff0ceea72c425db8f606a93cdd065bf858f06652c273437272b81383f2 |
| SHA-256 | 1194b854a440d2ca2761fe808664cfd019a76c1021ca49ec341c0fbdb3abb9a5 |
| SHA-256 | e0f3c86ec33974e9e363fd6ac8bfdbff28e38cf769a42e8bd4c77e60fe45af6c |
| SHA-256 | d7bbfd63ae32b940d02e98ccb7b17a24084500764a3d5afe6f1cf43d67c703d7 |
| SHA-256 | fdaeda16b967d786c04113d2fab1e84cd882be9753f828b2b266925236c13d06 |
| SHA-256 | cfb5d4ecc68c5fcee51bb86f56dbdf5c03d36d88ed354f31108553ceb3d4523c |
| SHA-256 | f1f660e1a9fc6c4f3015095f6fbfdaab9b8779b876618ea7b702cda7e66fb0ee |
| SHA-256 | 2028d18e67cbc00bcc01fdc7b7e8b6e528d5cd9fcf2ce6d5d3d6786d8240bae  |
| SHA-256 | db77e5fc20c9a83f6724b834efc47f88f9f537d34c463ebf463a32aa50cb508e |
| SHA-256 | 72fe7f2312768451609ff8318a79b3ff363502200791676cc5c881576cc53f36 |
| SHA-256 | ecc1a05f6e953b29bbb35bd85dae065ef77c7df5051a9145662c99051196d5d9 |
| SHA-256 | cabace715a70eaa12150261e96c859d5621bc064d709d7fe66509180dfb10f96 |
| SHA-256 | 45818bcb00e473c0c0c227ccc720a1f0f1ce72ce74792ad82e86749c09813562 |
| SHA-256 | bb9be4e3c1a3775cf477e63d1ab80dbb491231621e076056f4fb898a1862e526 |
| SHA-256 | 1e40b94e3c24e3bb9369e7243d7552cec3c57917f5b612fea5e29942c9163156 |
| SHA-256 | 25ce450e421c15e7611c94ca1bf5e6221a093b70912de7ed3266422026a93b0f |
| SHA-256 | 4f78680b227f8d50d481d0069c26abcda00ccf581b089460f049716095dfbae3 |
| SHA-256 | a1d666150009a7f96d4da10ac4949ef2740f7f0121d49ee86604150cbc9bbb0  |
| SHA-256 | c592a2308a13b4e9d977172ec311897e42390481b34340e03487560f98b333f3 |
| SHA-256 | fd2dd76224de282c5e52a90d59b6ac681f455f2548ac54e7b93c1cb5f7b23ff1 |
| SHA-256 | 71b60427e1329da764e50277713ecaa3496fca930e5c72e5cb00c08b7ac6d131 |



|         |  |
|---------|--|
| SHA-256 | f01cf0d4f501cdf6ae98b0856cf3c45139f5462f65d8e92c9a85a371f4fee800 |
| SHA-256 | 8e354b05b4a3449ffb9e0cae48d918663b4ed04dfd6ee35b585472d4ab3cf4e0 |
| SHA-256 | ff0da0ef8c207afd1ec5cd79619f4716bd3b749fc07825b3b0b71c247a08a431 |
| SHA-256 | 0418c061a9bec5a7fedb6b673c66e4e8d345049a8ab716d6e1b9108014d15c30 |
| SHA-256 | b7943567c82a97829eef401202be9c73d33698e2b6997bd825d188a489347ddb |
| SHA-256 | 85b1151a97135935770758ee300a76965ec04f4b754fdf2e2dbebc9445759961 |
| SHA-256 | 4dbfad99452e5177dc287d5787e3293310a1be0a21c6a04a358648247713e966 |
| SHA-256 | 2af57952f8a6715d1180de3b2adccf69b18fe949a9cf450b26f94434f3497e2d |
| SHA-256 | 1744c7ca6d87d1c6bc8ed07e222c9336d001f8e7a5042615ed8185479167b428 |
| SHA-256 | 74f774c335edced6e330ee9c5c84b9b32f4e01ffb3d60dc621f8ca2a0eafd410 |
| SHA-256 | f1de7b567caa33c8684221df0252b933952c735a9606e7304895164f9b946954 |
| SHA-256 | 40486e4c6b6f8275f4070027b4b454377966eb80c39587454d7fd43691fb8b24 |
| SHA-256 | 2e4ef607c9241e218ce8eea121884e50d85044cc04f0ef0d575989b5f7f8273f |
| SHA-256 | d410268ff562c480560f225f1522236c56eb87c6670933f2487c51c11be63170 |
| SHA-256 | 4c0abe8436760236378359ba89308813a4502b7ca5f2c0c8ac9e86b2ac8836f3 |
| SHA-256 | abfdd654fe28c62cef02354ed9d02c35ddb93f9a20eb77d541f6bc108737bfb6 |
| SHA-256 | c4ab1593154ddcf9abba792a85ee589d0a3fb4bc78724418e483f12e52520bea |
| SHA-256 | faffcde3d66b4e2bf528a652b253058d57b816233af0263d9a571cc356399f61 |
| SHA-256 | 9efa034f275709d3b30b55b691ef207e5a6b8ad4c60ffadd82b1853760a88cb3 |
| SHA-256 | c65b35fa4284fddca76b6d24b848b18d46c73cd4bf729f7f69db63eaedc6569e |
| SHA-256 | ee4459f12d515aaa2d96b88d646bcaae255c162da4d230a8cffab0c32a49514f |
| SHA-256 | 35c6b4967823771d8fd5d90c34471b4c9ad5e6103781f51cb8198b9f56de16b7 |
| SHA-256 | 9e2cbe3916cf4ccb6288a97864f2939bb7149070d8e44298079dbe00e2d834af |
| SHA-256 | 6629dd6b629f5abf7d08d83cc169617b720c4177fac1c307f58057f20f66db85 |
| SHA-256 | 9fd6ca4e28ddad205daf1acc5ce702a7267271385a8f362a9610a0e48d5e73a1 |
| SHA-256 | 863734f99d98e98c9705f61e6e74b62f32955c0559413701df33de734b136942 |
| SHA-256 | 0746907c071b3fec4577815a1eb1b2e962cf18229c0d9f023a09d87d11bd2244 |



|         |   |
|---------|---|
| SHA-256 | 3e9fbe0bbd1a1d6ac5e0895829ed0e4900b44b73ea1eae31183eb4f1db4a3401  |
| SHA-256 | 8bb1d5618dff1632ae73c31513ff57b3556e6686c48567c9351f39e47eb3c197  |
| SHA-256 | d2d2a3a71c6bc5abb4d16fb91521bcf3066d7a2cb5e23cb3b619d6ed99db55a6  |
| SHA-256 | 367d347679324ca42447d69357e3b6af2fa256f027fc8f672ec66873f6370f90  |
| SHA-256 | 210ff4b06cd06bce7056f7ad52c52bd6f2f62845bae0fecc880e056598b26439  |
| SHA-256 | 81caebe1cae927338aae295ec14c8fcd08bcebc49a5dfc10ad8afa722a8fe1f2  |
| SHA-256 | 17ecff5b020d9969070cece8bba3cbfef31f6135b084093183ee3ad3b4ca511e  |
| SHA-256 | b974989fc8f38ab26fd1ce3de792a52b05e7551a2e81eafebed39171113e3688  |
| SHA-256 | f47097502e169a29c4fc5dba2b2fce93261aa10df06e1c3a5bbc5309afe4ac2c  |
| SHA-256 | 447b1485e8e753b872e64c31044a5909df1730551cd42cec91414622bbf713e6  |
| SHA-256 | 082612baf625df965251446a1b640ebe45a3caa614fd13a7a2ab09b3166b2c63  |
| SHA-256 | 1c611891379ae7f1f758fad795e58ddb31e181bbd0e7a1f57b58a71a905a2527  |
| SHA-256 | 366e9c45eb77f95da5974a1d60eaf0a7c26dd77d12649165dda91f3f02c34cd0  |
| SHA-256 | 1ea2ec7823a8fc884fe9ac17f12537a95c3bcb83057dadded9eb038559c6c2bc  |
| SHA-256 | 85ca69302b422ba0c29e29ea68f250ad6db23721f15abe418097cdc6e815ad60  |
| SHA-256 | fe3622efa1be49f9a22caba8abbf49392379125e42d3ea4597ad9c9fbf8a83f7a |
| SHA-256 | 56c984d653ca197e50642d21d4657cb33baf79bd3b11b519000cf3aea846413d  |
| SHA-256 | 8faf8e054514c308573146e72fab61ad51216a08bd3bf128a5d368ec5dd2ab0a  |
| SHA-256 | dca9f189481d98ed156cd898860665f9948a085d46ec098cf4cec7728569fc0b  |
| SHA-256 | f6150608baba19d370a378165d40891aefbfb27000f3c333f7b7ea3ecda980f   |
| SHA-256 | 37f5a61f43a90f437a3ca7a8583041b507c4e19cca21e4b384f21d945cddc2f2  |
| SHA-256 | 28d4e787d6ec4af449cc0a572cf24699756409dbcb51f6c540f7005bef6667e3  |
| SHA-256 | 39a506085723a8bc7dc7a79e03a6020f0fa5e7bcf55598edb5e6c6215a96191b  |
| SHA-256 | ab16fbc4fdf31667d0150b4d91e3abb984ef53b92ea32a1571501b4d92745ad8  |
| SHA-256 | 7a21d20932c7e0f5bd49b8caad2233ee8418e2ff1993922eafef4dfc90000c4a  |
| SHA-256 | a9357a99a5cb90b87c38dff3da04c0f14770597ef6d61c3834530c9940c2d47f  |
| SHA-256 | 529913d7242ed6e7f06ebd3b51e770b5fb7ea6e2b2894b3432f010e0c8167e8c  |



|         |  |
|---------|--|
| SHA-256 | 0603b725d5e29437694d397a725b4584e55283525e552d2d9dfd24b3cfc5b5e1 |
| SHA-256 | 1d35c6b388d34d0976f0adc84e84079bdc9ec9d943f1c7333e9f3bc6be374862 |
| SHA-256 | 9e49683f99bd011c389a034c089301d47631f3c21c2d5364e7b58ec3ad45a061 |
| SHA-256 | 97350de119f6e3eb2487993cf134b41ab48943c9a8075149eb67a60c75b474e6 |
| SHA-256 | 9bc23d1d8c86293484380bb667b5f219ce887a65847c511fc2b99e65acd199b2 |
| SHA-256 | d280c2e28027c9c01998d0a3adaff64b3c7a456f5eb25325b2bcc965f9692966 |
| SHA-256 | 1bc1dc26bc31992dee69e07752245630de61f8eb4a24fa3c246fc9bd8cb8be9e |
| SHA-256 | d48af91ef4c2e45b51ca4fd02d26b054a5e71f8c94304fd8f67c369213a22a3a |
| SHA-256 | 6731204f675f1fe7048d4657b3330d7d351b42854db99abc4e316d923fca6c95 |
| SHA-256 | da3a00d8234e809df6baa573131da5a1f59e68c9bde960d7af806a3d288308ed |
| SHA-256 | ba961ca34d659b2b7cbd39478c9b00d1e45a0c7588116d26a3630c6bc0ec0c18 |
| SHA-256 | 0ed49ee27afddfeef1d027e2cfec5b005b355baa1d40b9e386eb1ca4baa88c13 |
| SHA-256 | 49cbaa0fe15111e95b1fe7a70d85fea1968042781ff73796a8962676371674ca |
| SHA-256 | 6cffcb0e09619a3d084074e6dc48178adb41bda69704ab29fcbfb5cd96ca4b56 |
| SHA-256 | 12cd2db60a1150d0876e0f5e1e54062a60dab5f31a2d313ac9d14326be05d5be |
| SHA-256 | 32bebb9abb462b065560d5f96759037bb50b08d76369f078e85803f821eb4958 |
| SHA-256 | 2116533101b339e9969b88560895c1eb696fd5940a033899db2b727a734169ef |
| SHA-256 | 4a17c196d79dd641e6c98ca7a147dcf74110df0c836a787cd74243bbb11c5bb1 |
| SHA-256 | 8b6e3f5927aac7cc43decf2f88757c23b7626e3ea8c2adc002f0ce1330307445 |
| SHA-256 | cfcae6cb60d2b43ce17a784bf0d28b8a070d2ad73d9f618afb37ee7ea7648d5c |
| SHA-256 | 97ceb20e4fa657fb4046189c86bd4d0477d5a11c5d445b66051912a58d8c44f6 |
| SHA-256 | dd7d12131c6a3d56ad77cbf40670244338da690cd7a67b8a69d96e7b16875855 |
| SHA-256 | 646796db146812ee50edc3dc91e7045ce1443e585956581594def93b72ba65e9 |
| SHA-256 | 7f952503dcc16ba68c989c5e5cceda5e3a54a5e92593d399981f5ef48e128c3c |
| SHA-256 | b51454e4446fefcd4b54168b09161002854a76f949b471389799711642f395e4 |
| SHA-256 | f9dd1198c2aff53056e4dafff832461c7cfc9602aad183c5c70ce01e61256ce1 |
| SHA-256 | 49a931326801c6303203ea719552abcc1ebfc6bd30b39ec73812fdeb26c546a1 |



|         |   |
|---------|---|
| SHA-256 | dc7de41bc3477ea1f79b1f3d82abdfdd668ee57562aa7f5cb283a149b2b26e6d  |
| SHA-256 | 0e53383300628c927a73da296a14d6ffc03829e106d459d44c58e354c598cf7c  |
| SHA-256 | 1ae1ea2675c0d9207c8d9a4f5e99165e845f8e1ea698919e5b1d7d5e029b7985  |
| SHA-256 | 0c17d0e58b104b4f28def1e252f1dbbd7fc3c02e8552a44234f619cebb6bfffcc |
| SHA-256 | ce85a0361c5ab45c9fa45ffd563adcfa7796a59abd2c96e7c160a79e87215f90  |
| SHA-256 | 64f47e744ffb918e7fee05e3d92a8a1ce8bdffa4734234ddfb8bdc48def800b11 |
| SHA-256 | 7f113f14fba00928947738d7beefce25bf201162b5e47f735c308470ba3b1364  |
| SHA-256 | 1a46d439ff5a1b1c7252373de6f6b717ca0db6de9fcea3a383d9d84806cda539  |
| SHA-256 | 153b0a22f272c0a6eff8ba9642b68b5d69297825a744f5a0e404a4c30ce900bb  |
| SHA-256 | 155b4e32d2815c49a41f2cf8b1a90f49dd0bd100f7681fb74518342f894418c3  |
| SHA-256 | a9050b04772c81279dfd9e2f260a462ecd47be6c174a95485d943c4312e5a448  |
| SHA-256 | b763fd96b71861d0d8529be310063ea0135b1dd4875e7d8608565b56a991ec6d  |
| SHA-256 | 6b7d3a35950620d64fd9f96893a4abd106b734ec82113fde3c93d65db26ac554  |
| SHA-256 | ebf384ea4b4bb7f76bc86b94fe3012bf611ea947d1917380f20f37d0175855dc  |
| SHA-256 | 206cd6fa3091af62638f4c0f0f949a3fc8768ca68fa08c246efef69a335b965f  |
| SHA-256 | afacec0f07f0cbc744e92c291001200585ecca77b7afc43f475e4085b67c1083  |
| SHA-256 | 0d7e1d6b713463b95a20ff3c25b2625c2b8f143fccd45a2e4ff60509be05ee34  |
| SHA-256 | 73b88d88ff9e383da0199a9b9f1659656984ba7f442fd05c9986105ee672c0a1  |
| SHA-256 | 469340212bc260a2b394e7515d8aad3427ed516a722c59c37964a3250f99ab2f  |
| SHA-256 | 939a01f82cdce63aebdf4804ba690a783b7c5193d070f15d4dec40a3945236b4  |
| SHA-256 | ec72e2b479e63d233c6581c181ba57296154166fcc2e9b93ce9c487de4243854  |
| SHA-256 | 6f8dc57e544102a1951a816b8e82286da97924b8824ffec6f52dfd9d96b85a96  |
| SHA-256 | 6013fcbbcaba00b23f09326db64be8487749514ff8c18af9acbd5d4c34f9fdaf  |
| SHA-256 | 1195356c1c3fc936432aac2e377ad8585e328e03cbc2ce9c9de507dca5e34a70  |
| SHA-256 | b99a61062e7e7fc7a8acc5abd6da2ee6240610de64233077277fb9871808faf2  |
| SHA-256 | 8e29e734658fc995779fb32f5809e0c960f9310452300711bc1d454bc671249b  |
| SHA-256 | 4e450207f1468f2b7e321ea5c19ab986176a4f351848cb3bdf5b3d4dc9ccc339  |



|         |  |
|---------|--|
| SHA-256 | c83c6fb243bb76c47a3533bf362ba64beca9d3712b82058dd9b6e7bc64c5b169 |
| SHA-256 | 0c38e2a4f47fe360c433a62be9a7a41cf9dd2ae5a1aac8a9feb3e7898df65cc  |
| SHA-256 | 70d64e91c2af1c1e3037c9ededc2881b8ab1c6194b3b85c297a7d67e12c40a53 |
| SHA-256 | 390523e342c86383215ae1f71e4d81e215e9af85e34440a3134a7e4be51f6362 |
| SHA-256 | 42df5b906238cc70cd27242c70675d6bfbff7d5e3bd9af1460d4b2c9363e4d0b |
| SHA-256 | 5c30748d043c66226bec96d5752e1354061e2e03d7d453130fa22514c6502d6d |
| SHA-256 | 2bb34baa4985b87832ef1c158eaacf8eb38a92bd4a0c75a85484ae7b157d6bf2 |
| SHA-256 | 1b6bd2aae213e442fefce28959149eb7a7aa86153fc070c43f9ddcad659efb8b |
| SHA-256 | ce506b2bdf6a6e138d90684fdb03e1c81743bae4e9ff84adb111e7cd6b8b4231 |
| SHA-256 | 7e4688af63a654335b938c06a38ffd43b3258528937fb6d33c3e60123073d52a |
| SHA-256 | c67cb073263d30b63c7d0d9d3d2a65018a7a9d20cc55cbce988f61d8e130cfa5 |
| SHA-256 | e2d2443ec693600b793322450c7b45c0d8ef776d676ac400a6e5f2604a5f6b55 |
| SHA-256 | 5ec6917b761e5e4415ad259faf91157b60c1c20297074aa38e7536fa6a7507bc |
| SHA-256 | 9d1115a736a2218d63ff276d62569af6cd323505c46bb71aaaad8b32772e9249 |
| SHA-256 | bc92f3c8a72486e75d3f61b90812fc59435ec4a9d2177e43b87d2a42252a5f2a |
| SHA-256 | 98da38c607bc286d6611ffab1875fc9b13b029347284cbda0fd0ba7ddf055dd5 |
| SHA-256 | 12543513d6cc1171496578e3345b1328f685a2cbdbca9ce11ef5b4e02fcd1070 |
| SHA-256 | 4859c654ff2dfafa4ca4d28697f7324cc145f68ba300d35b1703762b2ca71306 |
| SHA-256 | b952a7d816176cda7e73df62c932c3a96499088ac2124370a2cc06a2c00881b7 |
| SHA-256 | 39f961f5b49ef78a9cb32548c8941dda6202da28953ce7013f5d8d3b49a69f48 |
| SHA-256 | 07dd531c1198ecf78a9d85e26db1f642de2c06d7234f46f97941afbd28bb742f |
| SHA-256 | 58053ffbbfbfd91863a1afb7c11a51258c14b3c172faaffdba54a322685e5d6  |
| SHA-256 | d5490af100592f7177f101364f618bb684c6d67e68d403969a3dff1f9f22ee27 |
| SHA-256 | 9c51d797f86de8d5dd11f32cd08bc1334d0ae5448143f8ce0908daa2a068f38d |
| SHA-256 | 798858adc873992a220bc2ad997472603a66a29208b362ae5894296811213635 |
| SHA-256 | fd3164a03f40f36ebfc4fd626cb060a3c7629b1858aadbb20b4b1be4b9fcb5d  |
| SHA-256 | 5ec174716f6f8c0607908f851f813747728a682d1f791fd77b1faf07ab2a5b24 |





|         |   |
|---------|---|
| SHA-256 | 68180d86939382b2c7c85baa822d4084dfd15b00379f6b73f579895508d0d1a8  |
| SHA-256 | d03a9517cf81eca522f483a8229379002aab4f1067ccf491f7d6cfac62e223f7  |
| SHA-256 | daeecaac77c9d471b83a0fe53c7dde6c5528816083045f595cc80f3471b5a501  |
| SHA-256 | 0b50aad9227e7710631506a0b952a40125f3aae353fa1d59134ef3b369ddc356  |
| SHA-256 | 8ca43a2e5dd633bc21f3456f5b763f5d7d67ace5dfb5018bd57cb9081541ffa9  |
| SHA-256 | 6f01dead504a57bbbd69ea29b2713d16e06c9f301a98b2a6df4bb7188aa8b765  |
| SHA-256 | 44d6b5ba479bd9241ce46b5c43d997a3fe91e837795e87c6d99b5ef13f0cddb5  |
| SHA-256 | 6b5ba262a2ebc25faf5be5d6b352e058321af034414bd02f6b1ff57bc886fd9e  |
| SHA-256 | 0f0b7c44f20af0bc954c5d7feb591bcdda778196df3376234f0122961c2799df  |
| SHA-256 | adfb0ca0806dfd866f8df9d521f62d2ac8a5b13fae84a0a04ec295cfda3d3972  |
| SHA-256 | 189f2913aa30f13ba77c981741a8fb12d3aeeee78cd2681b4a963fa6fcf6551f  |
| SHA-256 | 12e030a8a8eb29a222cc513af35959f69797ddc11de14a3b39fdbebf1bd14ac2  |
| SHA-256 | a71bb76044b10f5efc3d62549733bb5c4fc5aa43a7f6bf587dd4674ea9d7af0a  |
| SHA-256 | c7c8975f1651e1c963376c3fbf5967b79f50fb4956b38ef50b5afc3760f52aa4  |
| SHA-256 | f5a107e27f99c7939cb373a16955b876ca1e2e1c9e758d faef676d6a06f75ea9 |
| SHA-256 | 682f230c1d6a569685badcbf3c33677d2617eca9e8ef90a3c1a0512231a21d02  |
| SHA-256 | 1ed29d92e772bad8ce245ecddf005d79cf4b3adf19234323594ac74580a6c709  |
| SHA-256 | fea67e0fc66ec285dbf6731b3857336c9ab340d5b32a05a58df82623fe9093d9  |
| SHA-256 | b84639a45aa23358df184c56ad3437428818b30270f9eaf9b5ca8e445daac6b1  |
| SHA-256 | 83b08e3f27aedc722de697ce47cd20df18f03e02218fb352a2666040ef6341de  |
| SHA-256 | 25945f933846bd5fdbaff0e01278de2e27047fb7de83561f16c96c42aeb6ad43  |
| SHA-256 | bdaf30e135b8e58fdee0e2f22638fc66523df1d02c817ff78ca5827c6b7d4965  |
| SHA-256 | 134c71c9f65567f66abe4a54b63ef97b58ad9a9b564138fd9b4d75ad879c19be  |
| SHA-256 | 36c7a350a96f057a50c62b592bca9e37c06db766c9a7ca333e362eee9763d1eb  |
| SHA-256 | edb0ede51a9c1d2ffcbac7e8b13488ebf07e56dfb608ce9c15b84b4fec1689be  |
| SHA-256 | 7af983ce8fbd8cb9d770b2033bc37c3830589233a7505f0d90967721b56fd58   |
| SHA-256 | 8ca739804d7a65010bfee8d1a3216f0500d765ad3d1bc8824bf29fe8280501a2  |



|         |   |
|---------|---|
| SHA-256 | aa2e074d496cac95b3653fb48b619e42db96d83f13f7180992d410dd6f9b3362  |
| SHA-256 | aa6280ffe3e1e1a2a7472ee772c9a4ea68daad0e2dc55ac2601beca932ee8303  |
| SHA-256 | 0ddba1aab4bc850df675822195ebcbaa11a971c07570ff957ef2d1e97cafb8e4  |
| SHA-256 | d476d83f824482d12cb90b78bbabf3d8c2cf92cbec409abd168d5c942acaf197  |
| SHA-256 | d729a4322848d8f5c98e30cd41f15d52d4dd388423153da7a26f8ced64728f10  |
| SHA-256 | b322682150da97f483ed8b6ba577f31d85e7a71161172265a55dd41c2619526c  |
| SHA-256 | d9b8816dc05c98d38419c94b02dc18ebd9494d13088ca2e1bb757f987001c1fd  |
| SHA-256 | 4352dbb666e613cf17b6f452b58b7f88d64147c9b1147baa1c04c2247fc9a038  |
| SHA-256 | 646bf4adaa72d56a66242900f42cb3abf2e98299b574ee8a91262ad65d8bcdb2  |
| SHA-256 | f1eaeaf4dabc94a88238fc4782db88079b4f5bf51df9dab855893a86952eb38a5 |
| SHA-256 | c05b8de487f2518d37f2953a0ca42faf9d1c212d193677e106b9ba46914fd457  |
| SHA-256 | 28896dbe95dcea55842ddd9c4867d120ec4cec6a2302f22b8ec0ceec48e37f89  |
| SHA-256 | 8a96bec97c4ca99bcf6a212c68aefc805d101eb94306bbd9e60410f2e657a4de  |
| SHA-256 | a43a77abf5fa3fa7542839600e43e49f0e4f0722c171d7422c98fe5bd6414c33  |
| SHA-256 | 51e6e1de4350b8c240ef784ee757890645ed2aabc3db6e89cbf5f19e4f4aa2bd  |
| SHA-256 | 1ece137370d65bcd983fbd15f4ead6a04ffc6edbaa72b62aa0c701576f81ba4e  |
| SHA-256 | bc1935b38d06378081a63516cee4e1f9f6123fd27e9369ac8b00c0069a3d7907  |
| SHA-256 | 4a310626ad347227719ae4859fd0d96903bef54801e45fc0caba04bf5b2f2922  |
| SHA-256 | 9ad8ca0177c52c09a238fbf54f8b32e8416e345ab6a6d5246dd91195c52f698d  |
| SHA-256 | 43e54aef4b1b5236e801fe9a92611ec7f03c5a30e114b8826341643cb831e3d8  |
| SHA-256 | 0cab3c03fd16d9fd4427dd8a2b58740221d1cc0596b5e128b25a4faaaaa0010f  |
| SHA-256 | 31bb84cb08ed2e8374029ee9094dfc232dfb9d2712116fc2ebae8a1eb8cf0a9a  |
| SHA-256 | ee2da73179620f58484c7ce7052675cdd0e12d05ba43d7d1d0cde21ef8260383  |
| SHA-256 | 8299756bf5dcdb46b6baaaf349586f5007dd7cfd7566d68154403a20c81fb32   |
| SHA-256 | 5d4be7da054b8a8c7109aabc1e21ac20154999d1c2e6af53cbd531591d3636fb  |
| SHA-256 | 909b500f2eccdff396de2493e728b5f045cc5f2c0dac580c849920d62bdfa317  |
| SHA-256 | 08db445b34bd37ca5d8f816f35d8976313ba89b8b0cbec561ce0d1418a8e99b3  |



|         |  |
|---------|--|
| SHA-256 | 2bcd667adaaed27ac5688cfb171af93bf264b191c5aa43bec0f2a562c5c12a7  |
| SHA-256 | d89c3a2ba8454e238d5285409294240b4c3163250663bc8518ecb75f592b2226 |
| SHA-256 | df23a0ceb16a05d137ca49239c844e7f883d413bb361d7f33fac909951f6e11c |
| SHA-256 | 8955df40a67529fe0c11c88221474b1fbc6922a5e09a029e2cbb22e197f049a  |
| SHA-256 | 165c831f855faae266151cd223898ca1133f0c6a729757be96c583ec920f4e0e |
| SHA-256 | 79fb79c561c23d1ad7671aebb8d7c8c76560be47a6a6a705284fc367268896a6 |
| SHA-256 | 70fca911665f6d50a40a39119d043934f4c9538688411dd20c3e4275ac1ff1f0 |
| SHA-256 | 31fd23039c3d2cd75d9b8a4e51a267f7c7d678dd996d67506adb1cbfe0602c5b |
| SHA-256 | a36c1811a9838f6373d165c9af8dd5c43fb03e1f7430caa8a66f5bd9a9118039 |
| SHA-256 | 69684dbaffd4e4d56d86b2388bbf82d27a71a8a3039ca9a54297e66671b364d6 |
| SHA-256 | aaa795ae456657c0c548ecfeb4d70c88947ba784e00eb513ca68c69fa772f148 |
| SHA-256 | 75524c79d774e9e01e17542909cc577c91cd08bac63bcd6f7a6414221f17f628 |
| SHA-256 | fd03030ad1573a6e556bd655210febbca31173f9aa000f145b2b076a121ab1aa |
| SHA-256 | afa26a2906f0c59df9dd461967501fa683d760cd5a90db7d43dd6f0f3f33ab1d |
| SHA-256 | f8c1e632a1ad12cd10d48e67b7ec7d58b133a1e624ac39f77fe7b121562c8acc |
| SHA-256 | fa25a9987997b5bb2ee76905f6d6a3c5583b6751edd5e720640d712b2b094205 |
| SHA-256 | b82ffc18cf80c72800f2b4e8e98585fdb8f28f80acf09aab11e7ea02f0cc513a |
| SHA-256 | 43c39e05ae59835e16df8bd732cd035292db70bc2c2d6d95ac354622bfa376ec |
| SHA-256 | 583df630da89bd8232dbf8ae96b9f41d35a2f3c3295493923ec853573acdf362 |
| SHA-256 | 2cf5f93d5de1ac7c9ad9e44bb7a6ad31401c4423ca436b7cbe7cd80aaf19f42c |
| SHA-256 | 5d4a47079455b8c76eaecfe41bdf591f08326b8a1b4f05d6a3ce8c07e9ff4da7 |
| SHA-256 | 9e82d755d227db4798e369cc866df8dcb39c9da047b31152776dc095bc7d6ad3 |
| SHA-256 | 99ecfda54daa294d75b8df1d697e916bb8b3a0f415efc6d75db141d87b7d15b7 |
| SHA-256 | bf3236c400c71f26929fe88dae4c285b9f333a13be96c55cab236236da36f05b |
| SHA-256 | 3db2c007881ed7cc32ad32c5623a4160597a22804d3a1700de1dda5775823104 |
| SHA-256 | 1679470bcb55a90270c4a18468cea165a9f21e116a7f3d603f701a073a459e0c |
| SHA-256 | a7f4d2182b5ae149b4ec50291bda2fabfb0a07cd94118e71f24d936a1d0502b7 |



|         |   |
|---------|---|
| SHA-256 | dfe1d62ed1673dd1cabf1a8b9e5214e5bbd356fc8c393102e3909c8e4dc4e718  |
| SHA-256 | 05b15206bf4abcee9c6fecdd20183d5de105465e8539b92b7ec8ea7d706de5e1a |
| SHA-256 | fa0a5b1711ce29bd568ef6e44e837d035a26f866cb03d0f5b1d8cd0bc64eb53d  |
| SHA-256 | 8cfbed2f05026da5dad889a619b66f3a7e71bc32d5bd67ff31ffcd0935fb891   |
| SHA-256 | 7ef10437af99524e348b41e33c32a2c7c6270265b535700f3ec8c97f6c4f8a93  |
| SHA-256 | 413c154ec7d8b16f4676e02a4c2850a9bb63e831a4cc45bc517b61da26dbd402  |
| SHA-256 | 52be2c56b5089e46e9ae92f8b190dc330e768569682affda8beec43eb38854eb  |
| SHA-256 | 56db43a5e7f10529eef56740be4a7f491129aab463360fbf3f5fa43145bd0f13  |
| SHA-256 | e4d976396b1032b0e65a159aa2994614afd63c1537ce071cfc001cd9e83276eb  |
| SHA-256 | 860aad85460bed9c0bdd2b8b5983e8d091f8b927d888e2125f62bce90df84e6e  |
| SHA-256 | 7c87fd016749d2a4514dc18c447ed574c623a33a0a41587a37f8cd3444b9ed34  |
| SHA-256 | 18ec22d2139974fc1cfedc17c71b76e8bc3951c743ba5614212934aa50e5073d  |
| SHA-256 | 1688fb569a4afee36be039afee4bcc0996f24dd3e44ca011c066937d1212374   |
| SHA-256 | 55832ba41ee5aa1389ff02aff9c6a42bd0fe3bff1a16a74bddf1e9701f2bcc16  |
| SHA-256 | 6a2567493e5b924b5ce27bdfd081dacdf8afd22ac241a7e85884f770877a1b09  |
| SHA-256 | 366f2df04086c01c5adac46c5101bb811e7182b6be6666781e31a5c37139543b  |
| SHA-256 | 5e9bfd91b1771c05ceb90fb40f8955aee3aab8ea1f4a7246c-fb6042d26df0027 |
| SHA-256 | 3a1509af0c737d26b83a915482f56caf3d255e7cfa2d7c7fedb4e1eaaf9a7340  |
| SHA-256 | 8bb5d0629161ca6b041affbf395c1c4e78c03604697d5e2de1eae7eaf3a318d9  |
| SHA-256 | b41fa95978810f99b121f04c79db918a36d2d42842fb8fe3aebd05159b3b6008  |
| SHA-256 | d918eafc7bcc1eb779121088933bd13138011ad315473a81a6b239fbf128b2ab  |
| SHA-256 | 16371fac8e96d6f22fe302ceed833c2df56ff0d9b53ef21df9df25920e5a89c1  |
| SHA-256 | 6599694af36ce5920f2bb3ecf0c740751a20de8802f2d3747ed4e0e0d9401bc4  |
| SHA-256 | 61c7b20009359141ba5ed4f8fe32a92b731662a8b2d981162cd3429795bf858c  |
| SHA-256 | eab8515e35ec704406b081030424c64211f05485350c1081e70db25852212d81  |
| SHA-256 | ac6fcf3b1884f85a726aabeb592d9a2752b2e20673fa080a0bf16e457b068b5a  |
| SHA-256 | 45a92b7f9bfcc92d62941865a94a93c8a82bb4fa6cefa4288987b85f9e78de6f  |



|         |   |
|---------|---|
| SHA-256 | aac54adc3f27fe8c0ce75cf9a9452cc5007f3bed3d3fc84ebfba42fc5c73ad98  |
| SHA-256 | 4708bada9bbf77daade9a3f124eb0f5309ea68bba94c5bb4b332701d1d010185  |
| SHA-256 | d8ef7afbad1322ce85e31f5a981098a6bb235d41a768e23eeb582dcee969de67  |
| SHA-256 | 7ca9d3249c04c7f190fa37d22d39dd410e3557c5e4612974cc9999ab1105ce0f  |
| SHA-256 | 8490242e4ec82f072dfffa26a9b9f9331e0b36f34786e1b2836a540601a83831e |
| SHA-256 | 978d38e0a3fd3d5b0f0738d3da11a8ec2579459bb44fd68959efd4fb20412865  |
| SHA-256 | 19e2d26c64f5e0d8765b783417c6467bfac970e460c7c0fdceb306d2acab300c  |
| SHA-256 | c4074fab85bdfea9ce9a7ac3869bb01ceed22f8f87350f1e4fef973d74f03b61  |
| SHA-256 | 5dcf5481d506fa022ba086f73aa52012733399b05b4556262f0f45d3682ad9fb  |
| SHA-256 | 02d947a8f1fc9da75e973b20339c86ef1b72f95127b870079d838c431f0ca96d  |
| SHA-256 | 13b6941104b60c707bfc64f5b6110e57225e2cf646f97d3a0e7f5e8f39bb4fe3  |
| SHA-256 | 3c1afe298565b77c5c91c36fc8758fc967e90d849f20f9d4daa68c082a8a1206  |
| SHA-256 | 5a0590f17edb0d5faf3cdc897564a9dddc0deda9e1cc98c9d5bd30026eafebf   |
| SHA-256 | ceaa916e9f9ed9a36b0d2dc91d1f43ee4c0e6a17e2419f35b56f7ecd822569be  |
| SHA-256 | 0c3c10ef82641422eee9c5540cde2c967ee425febfe271c77dbaabf94b372c04  |
| SHA-256 | d16bf33f29e56d6bf0e8b04650360aaac0af791fba838d20d689ab6e86c97edd  |
| SHA-256 | ae06162a5d6deb6cb98b2c2f0d1f5e1c8427f15d271e90654d47520833d3f106  |
| SHA-256 | c533150826bd6cd5b29cc1ec1b552091e976f7ec10044796f947bc262023d9bf  |
| SHA-256 | 094eeb7e9fd5e1729b7c2fbd5c433bd10a46d42ec40107847048fffd514360b6  |
| SHA-256 | 5296e539eba85bde7882e10c495b5f6d61726ac4b2ad5d6938c43ad27b23dd2f  |
| SHA-256 | 631c5e9fd885b9265351f4be1562ed151d7c8c0a9ed30ddae5614d8091174ab7  |
| SHA-256 | 300f499649e02453118df01079d107dfca31dad7e1bd12bdb3ba4c2f5353f6a   |
| SHA-256 | ae1179b81afcf73748c1e3fdb565cab830231ca0315458afababb8793ba51e    |
| SHA-256 | dc8ed932e1ad2d0f057f5526a4c7890fc626ebf266207fd9f18198507c1a9d56  |
| SHA-256 | 50c3ea6070dee7d283807af750a6df61fd63205c4b25edb9bc88ee4b03a9ad73  |
| SHA-256 | bc5589866214e617b6b2c837f304660d6ee61d46dfaf99a56e79605ae7af277c  |
| SHA-256 | 0a8536fbadc0f04095eaa8dd631dad35235f2029f8b2d5bfc3448a5b4cf01736  |



|         |   |
|---------|---|
| SHA-256 | 39217dcc0bc8300ae8115e3d9bd8e2dfaa4a99b8484c64dc7a094eb1d2d201f3  |
| SHA-256 | f0b85c3d890019c1d88274fb49f4caa52d696917a418ffee89324ad40d0076c9  |
| SHA-256 | 13e98dcbf169f54503a15d9415b086222ae48f2e872c69c9417e56d29f610b85  |
| SHA-256 | 743935bc932edef43e7e72c07648157a8d83f2da7ed54129244cabd22ac44229  |
| SHA-256 | 7da8dab1a7b9e582a48a7ded699ec702a8f933124f89ef4768e09a84f05e0aae  |
| SHA-256 | 1dd2600acf1eed3a99795a0244d2e7d11c31a0503255b0ef36052a9bc530583d  |
| SHA-256 | e74d0203c98215cac22c44d570196d455994ae81a0c02fbbc5baa92265f98881  |
| SHA-256 | df5c2c7b57763a427514f779070a46eac021b959eb0abad43a1cb7e642c34ed8  |
| SHA-256 | d4aa0e2b4b005356e0b9307a1dc2999342101cddae08df15230d1616f515f3bf  |
| SHA-256 | 4e6ac3d48b85a41867a4b9bd76e9c8327baa37877be6d3b5cbbb9067f90772a3  |
| SHA-256 | 3d796811537b7a90541756ece3502010361a390f89314493a15136766beddd7d  |
| SHA-256 | e219db61d4b4be7c76130ab84c894deaf5915fe6fd6a9dfc6d599abc87db4f14  |
| SHA-256 | 9f55aadcb2b5fd225bfd4e58df70ac451260b51003a427eecd28571ff08a73692 |
| SHA-256 | 849f40e6a2110ed77357e20496200391101bd03afcbfdc5400783d56d6897cd4  |
| SHA-256 | 473371292436f25e45cefce63f07873b90c28417e1a7a57fe506ab0b4a566309  |
| SHA-256 | d8dbe8c7c76e0d6b848530dc9d4c30c291b0db44cb994ef1a2c92ee7efb168c4  |
| SHA-256 | 00751bd523b0cd07e37661770baf6cf9f523e432bffa5dd36d185d4ceb31c941  |
| SHA-256 | 3ae199b4522d6234b4a891ead70c992e10f34dd931b603ee116eee80731c018c  |
| SHA-256 | 7943f6f2d61c7740064444908a89dcf669544f043b5451ca70b7ff5ba1b706ad  |
| SHA-256 | 8fe48884269f2ad971ef5c026aba267b3a6185934fcf98add5610764750e8e1c  |
| SHA-256 | 036a4f70ae5c08e819451b260b7990b8112671d8621cc19f1f2c7d469668f2ce  |
| SHA-256 | cee5c36e2cada768582509131964535c3733e38503cbdeae536230554ec9b648  |
| SHA-256 | a7df7cd07cdc4401cc414c06616d1bbc8efcdc4fe3ad18e6ab5f1bfdaef46cf4  |
| SHA-256 | 312316a68974780a517dfabef9e360c5891441218199b77527be3e9fe2b5fabb  |
| SHA-256 | b1b2c45d348b6eddafc31b5a33660a21bda65c8c51684a70c58486992c0ab131  |
| SHA-256 | 28657acf0a25a10979f1f7df41780b42fbee920272067f9345f7a6a4788f889   |
| SHA-256 | 2eb5d0d50f2940ea6f3c225ad9064e48dd7135329a560c013cb88e3e34867c65  |



|         |  |
|---------|--|
| SHA-256 | 35a67d72150a695f7337af849746e64dae8245784852fd03908a7d918b05eaf7 |
| SHA-256 | 2e4b741045b4b37e50fa55678d713e6a63b87df0f5dc912b90c1487a8e9fcc85 |
| SHA-256 | 07ac51324c11dc933a4f70a3c0c41b17202be72d54026bc9ca84e807cd38331c |
| SHA-256 | 209fb7453e92e27f0ff6e8bd0589c369608cd38279f32ce275ddb484e46c1a0e |
| SHA-256 | 935322a7ec261072f5d4a8c83bde20c98896569e7c9691cec15bd62dfd0f3bbc |
| SHA-256 | f6560a6df4a8ab71dc38a2342f31467b8db769a9b68f370e21475a3bd54e9724 |
| SHA-256 | 8c4e60af9d293ee5753099efdfc1b22ffe5ba1e934c7fe3d9e5cd6aab566b6e7 |
| SHA-256 | ec865473d2e22c58fd652b61ab9003b1e1e07e51ad1ad0d6862ecab2193d7325 |
| SHA-256 | e691def70fb7dfd50634e19d97d306c1bb20875a6f1ea49969c8946bf9387135 |
| SHA-256 | e968737386c372787950724c6e83ded19869a549a4f906faffc21ced8e004ce8 |
| SHA-256 | 087fcda55ec55faec74944bb6f0dfa012fe3a9f2f0fc32f70ca2080b372f13c  |
| SHA-256 | ead2f022b54f8b413c2e8bc7bdd56721d5768d954d6f6668150b087cd730c0fc |
| SHA-256 | 73bfb78faf1bed43622fa2456e1869b36fdcddb4819f098f4332e7c151deef87 |
| SHA-256 | ae99cad2dbcb3e0a038109ea97028fbb4a2054580387816ec568d40017893833 |
| SHA-256 | 5e4600133854483efe55622638058c2eb70db2e69d0ffcd7966cea4fafaf056b |
| SHA-256 | b01a533ddd6629dcdfbce0816e553d5db36a99a233db33719be0646476a7c0b  |
| SHA-256 | 4803d962c4237ff0803c3e8d4d32caa6a5a14701008218604fe9c9694f2d9465 |
| SHA-256 | 6d08d501aefe06c08b9bc6b74f8469a496420e4ecb8656e7df089503916db16d |
| SHA-256 | 97d053aaecfd9482598967c4c0e1afba486923568750471ca8163229da416fac |
| SHA-256 | 32e3b1b765b96992790ff890e6035bd3e40b0ac5362e0f014e4159137dbba517 |
| SHA-256 | 312c6ed6f6cfe49b68ac33a2d82a2f4ca329ffbc2c1a4fed9c9d4679c579866  |
| SHA-256 | 7921b960d77c2e50fa88a7615c533b6e2b5a98309518524e5d52a74bca31999f |
| SHA-256 | a3b35a71f583bcf074c0c395136fdcabcc9320da9087de01c8662ed89845053b |
| SHA-256 | 75d6ae6386fc7df5e94d840625d91abb5afb581f998a670d7040a26d2cb7a2b1 |
| SHA-256 | 3d80ac32d585cf551105627cc495f4838904ecf7f28994c3b768a3d3a23e9b18 |
| SHA-256 | 0b5b79893faa97f10737f52617ff8cdf0de0c0e064ae8303cd12eddf23ee2141 |
| SHA-256 | eafd24a879b0e1458630666c4dbcc4f20c14a00b48525d05ef6055312085c10d |



|         |  |
|---------|--|
| SHA-256 | a4b3739a41f76cf3e06e4aee4f233ee47f4e7c87c62ed27bcf5c81c4ee606aa8 |
| SHA-256 | a44b70a1cea5e16757730274e80a0f785bcd7ae0bde06374ccf8bf0cc5e721c6 |
| SHA-256 | 93f9b475ef2e0dc91101814f485197f041e71cf836e505a29d57ae339638013e |
| SHA-256 | 77e2467db5a0e05a373577bd5a04c1f5ecd4282ded59a0d235f61fd915f2e58d |
| SHA-256 | 6c87a7f056d1d58c866403dcbacf41b7ff0d50d0d8b5730b124fb3bd37ba826a |
| SHA-256 | 1a1f6050023046163bdcf16fe83999554c72faed9ab68d586eb91713a60ed688 |
| SHA-256 | 0a4138d9e5578d0a7dc250a5a6bf0bbb44466fa865345476b62c819557b46f05 |
| SHA-256 | 2acdad8fb053ef81b80f76b6f7bb5e599ffe614de3374c7e01574483bb145534 |
| SHA-256 | 79da1dae8057720670bcd81c3b4772407ca4fb20c78a567fe65539d24e994ba9 |
| SHA-256 | 0ba54d7cbb11bc55914b2dec8df50d2585d337d52a5eb520e189567bae8f130e |
| SHA-256 | a401b63f7c9b0b73fdcb9551bac18b69eaec4fe4ef167e85ff2c25bfeefedbbf |
| SHA-256 | c20fce90bd978fa2b6a5dbbf64bf44d941f268a0e274a823f93b7366f6f18ab1 |

You can also access this IOC list and other IOCs provided by ThreatMon on ThreatMon's Github page and make your systems more secure through this service.

[ThreatMon Github IOC List](#)





010100011010000110100101110011001000000110100101  
11001000000111001101101111011011010110010100100  
0010011000010110111001100100001101111011011010  
111010001100101011110000111010000010000000  
101101001011011100110011100100000001101  
0000110100001100101011100100110010  
0110111101110010000100000001100111  
000110100101101110011001110010